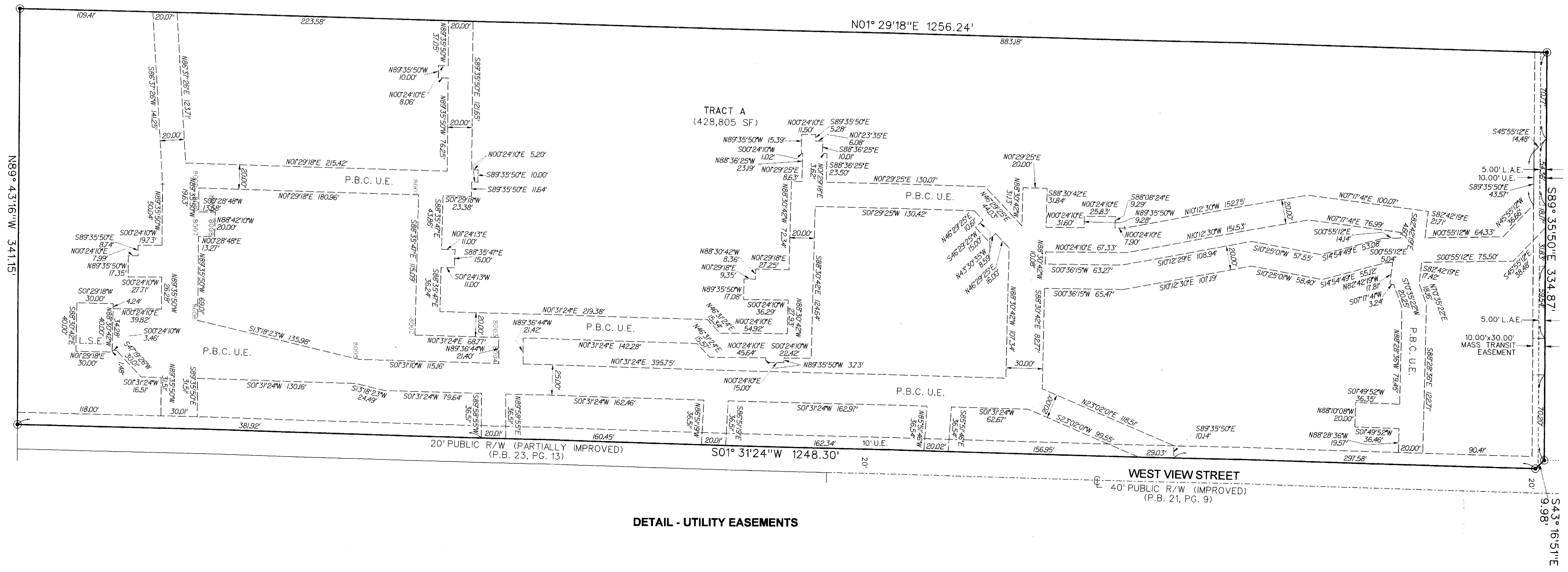
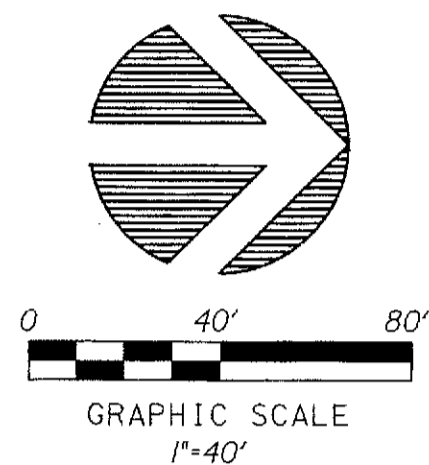


# COLONIAL LAKES

A PORTION OF THE NORTHEAST ONE-QUARTER OF THE NORTHEAST ONE-QUARTER  
OF SECTION 26, TOWNSHIP 44 SOUTH, RANGE 42 EAST,  
PALM BEACH COUNTY, FLORIDA.  
SEPTEMBER, 2011

- LEGEND:**
- SET P.R.M. (UNLESS OTHERWISE NOTED)- ALUMINUM DISK IN 4" DIAMETER CONC. MON. STAMPED P.R.M. •LB7264 CENTERLINE
  - ⊥ CENTERLINE
- ABBREVIATIONS:**
- AC. ACRES
  - B.E. BUFFER EASEMENT
  - CH CHORD
  - CHB. CHORD BEARING
  - CONC. CONCRETE
  - COR. CORNER
  - D. DELTA (CENTRAL ANGLE)
  - D.E. DRAINAGE EASEMENT
  - I.R. IRON ROD
  - I.R.C. IRON ROD AND CAP
  - L.A.E. ARC LENGTH
  - L.B. LIMITED ACCESS EASEMENT
  - L.B.E. LICENSED BUSINESS
  - L.B.E. LANDSCAPE BUFFER EASEMENT
  - L.M.E. LAKE MAINTENANCE EASEMENT
  - L.M.A.E. LAKE MAINTENANCE ACCESS EASEMENT
  - L.S. LICENSED SURVEYOR
  - L.S.E. LIFT STATION EASEMENT
  - L.W.D.D. LAKE WORTH DRAINAGE DISTRICT
  - MON. MONUMENT
  - O.E. OVERHANG EASEMENT
  - O.R.B. OFFICIAL RECORDS BOOK
  - N.R. NON-RADIAL
  - P.B. PLAT BOOK
  - P.B.C. PALM BEACH COUNTY
  - P.B.C.R. PALM BEACH COUNTY RECORDS
  - P.E. PEDESTRIAN EASEMENT
  - PG. PAGE
  - P.O.B. POINT OF BEGINNING
  - P.O.C. POINT OF COMMENCEMENT
  - P.R.M. PERMANENT REFERENCE MONUMENT
  - P.S.M. PROFESSIONAL SURVEYOR & MAPPER
  - P.U.D. PLANNED UNIT DEVELOPMENT
  - R. RADIUS
  - R.P.B. ROAD PLAT BOOK
  - R.L. RADIAL LINE
  - R/W. RIGHT-OF-WAY
  - SEC. SECTION
  - S.F. SQUARE FEET
  - U.E. UTILITY EASEMENT



DETAIL - UTILITY EASEMENTS